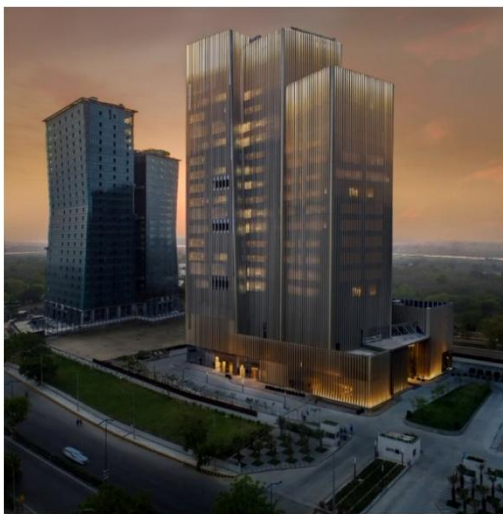




SEVABHAV | EXCELLENCE | CREDIBILITY

CORPORATE ENVIRONMENT RESPONSIBILITY POLICY

Estate 128



MAX ESTATES 128 PRIVATE LIMITED



To know more about our
Sustainability Strategy, scan
the QR code

Contents

1. ABBREVIATIONS2

2. INTRODUCTION.....2

3. PURPOSE2

4. SCOPE.....2

5. COMMITMENTS.....3

6. GOVERNANCE.....3

1. ABBREVIATIONS

- **CER-** Corporate Environmental Responsibility
- **Organization/ Company-** Max Estates 128 Pvt. Ltd.
- **Management-** Consortium of members of the ESG Management Committee who will be acting as an ultimate tool for bringing in final decisions.
- **ESG-** Environmental Social Governance
- **EMP-** Environment Management Plan is a site-specific plan developed to ensure that the project is implemented in an environment sustainable manner where all contractors and subcontractors, including consultants, understand the potential environmental risks arising from an operational project and take appropriate steps to mitigate any such risk.
- **EMC-** Environment Management Cell
- **PMC-** Project Management Cell

2. INTRODUCTION

Max Estates is dedicated to deliver on its purpose to 'Enhance quality of life through the spaces we create'. Our guiding philosophy of LiveWell and WorkWell is rooted in ensuring the holistic well-being of our stakeholders with close attention to physical, social, emotional, and environmental aspects of well-being.

3. PURPOSE

At Max Estates, we recognize our responsibility to steward the environment and strive for sustainability in all aspects of our operations. Our Corporate Environmental Responsibility (hereinafter referred to as "**CER**") Policy is founded on our commitment to minimizing our ecological footprint, conserving natural resources, and fostering a culture of environmental consciousness throughout our organization. Max Estates Limited through its wholly owned subsidiary "Max Estates 128 Private Limited" has proposed to develop Group Housing Project named "Estate 128" located at Plot No. TS-02, Jaypee Greens, Wish Town, Sector 128, Noida, Gautam Buddha Nagar, Uttar Pradesh. (hereinafter referred to as the "**Project**").

At Max Estates 128 Pvt. Ltd., we recognize our responsibility to steward the environment and strive for sustainability in all aspects of our operations. Our Corporate Environmental Responsibility Policy is founded on our commitment to minimizing our ecological footprint, conserving natural resources, and fostering a culture of environmental consciousness throughout our organization.

4. SCOPE

M/s Max Estates 128 Private has proposed Group Housing Project named "Estate 128" located at Plot No. TS-02, Jaypee Greens, Wish Town, Sector 128, Noida, Gautam Buddha Nagar, Uttar Pradesh. The Plot area of the project is 40468.5 m² (10 Acre) and build up area of the project is 121044.34 m².

The proposed building will comprise of three towers, Tower - 1, 2 & 3 (G+37 floors) Maximum Height of the building is 136.65 meter above road level. The single levels of basement would provide space for parking and to house the services infrastructure.

The scope of this policy is covering the **Estate 128** project of Max Estates 128 Pvt. Ltd.

5. COMMITMENTS

The organization will ensure to adhere to its commitment to CER in all its processes & policies including but not limited to the following:

1. Contribute the requisite percentage of cost of construction to CER initiatives as per the eligibility of the size and scale of the Project.
2. Adhere to the environmental management and mitigation plans set for the Project in the [Conceptual Plan](#)
3. CER falls under the ambit of ESG framework governed by the ESG Management Committee (and its [terms of reference](#) at Max Estates Limited's level).
4. ESG Management Committee plays a key role in overseeing the risk management framework associated with climate governance.

6. GOVERNANCE

ESG Management Committee

ESG Management Committee is formed at Max Estates Limited's level which plays a key role in overseeing the risk management framework associated with climate governance. The ESG Management Committee identifies a list of sustainability initiatives to be undertaken in a financial year and monitors their implementation on monthly basis.

Environmental Management Cell

Apart from having an Environmental Management Plan, it is proposed to have a permanent organizational set up charged with the task of ensuring effective implementation of mitigation measures and to conduct environmental monitoring. The Environment Management Cell (**EMC**) will comprise of the members of the management of the Company who will work under the supervision of ESG Management Committee.

The major duties and responsibilities of EMC shall be as given below:

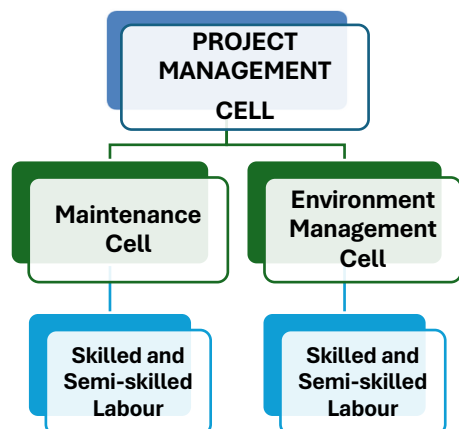
- To implement the environmental management plan.
- To assure regulatory compliance with all relevant rules and regulations.
- To ensure regular operation and maintenance of pollution control devices.
- To minimize environmental impact of operations as by strict adherence to the EMP.
- To initiate environmental monitoring as per approved schedule.

- Review and interpretation of monitored results and corrective measures in case monitored results are above the specified limit.
- Maintain documentation of good environmental practices and applicable environmental laws for a ready reference.
- Maintain environmental related records.
- Coordination with regulatory agencies, external consultants, monitoring laboratories.
- Maintenance of log of public complaints and the action taken

Structure of Environmental Management Cell

The Project site will be supervised and controlled by the management supported by adequate team of technically and statutorily qualified personnel apart from the operating staff of skilled, semi-skilled, unskilled and other categories.

Hierarchical representation of the system developed for management of environment and to control pollution is given below:



Hierarchical arrangement of EMC is being elaborated herein below:

Project Management Cell: This is consortium of maintenance staff and environmental engineering group. This cell will look after everything related to the Project after its completion. Under the Project Management Cell (**PMC**) there will be Maintenance cell and Environment Cell which will look after all the matters on ground and will be constituted of skilled, semi-skilled and unskilled workers for operating the Project.

A. Maintenance Cell:

It comprises of maintenance staff who will be responsible for looking after maintenance of all the plants and machinery installed in the Project. All kind of mechanical, electrical or plumbing related problems or issues will be dealt by the Maintenance Cell.

B. Environment Cell:

This cell will be responsible for managing and complying with environmental conditions as per Environment Clearance letter issued by UP Pollution Control Board and as per other pollution control board norms. This cell will comprise of qualified environment engineers, consultants and other staff and labours as per the requirement. This cell will be responsible for:

- Operation of Sewage Treatment Plant.
- Landscaping and beautification of green belt.
- Water conservation by using treated water from Sewage Treatment Plant.
- Maintenance of Diesel Generator set as per Central Pollution Control Board guidelines.
- To get tie up with authorized vendors for solid waste management.
- Filling the six-monthly compliance report.

EMC will seek guidance from ESG Management Committee on implementation of its charter. On a need basis, EMC will apprise the Board of Max Estates 128 Private Limited on important developments.