

For Estate 128: U.P. RERA Registration No. : UPRERAPRJ446459.  
For Estate 128 - II: U.P. RERA Registration No. : UPRERAPRJ294911/12/2024.  
UPRERA Website <https://www.up-rera.in/>  
ARTISTIC RENDITION

# A letter from your future home.

Construction Update  
April 2026



ESTATE  
128

Promoter name – Max Estates 128 Private Limited, promoter registration no. – UPRERAPRM235248 | Collection a/c of the project – “Max Estates 128 Private Limited Collection a/c for Estate 128” | ICICI Bank Ltd. having IFSC Code ICIC00000031 | Account no. 003105042349  
Collection A/c for Estate 128 - II: “Max Estates 128 Private Limited Collection A/c for Estate 128 - II” | Standard Chartered Bank Ltd., K-3 Brahm Datt Tower, Sector 18, NOIDA - 201301 having IFSC Code: SCBL0036024 | Account No.: 53005090207

# Estate 128 — *Real* well-being begins at home

Every space within this landscape is thoughtfully crafted to nurture the social, emotional, environmental, and physical well-being of its residents. From quiet corners that invite pause to vibrant courtyards that spark connection, the design inspires a life of balance, community, and vitality.

## **Social Well-being**

Courtyards, pavilions, and gathering lawns bring people together — for celebrations, spontaneous meetups, or everyday conversations — nurturing a strong sense of belonging and connection.

## **Physical Well-being**

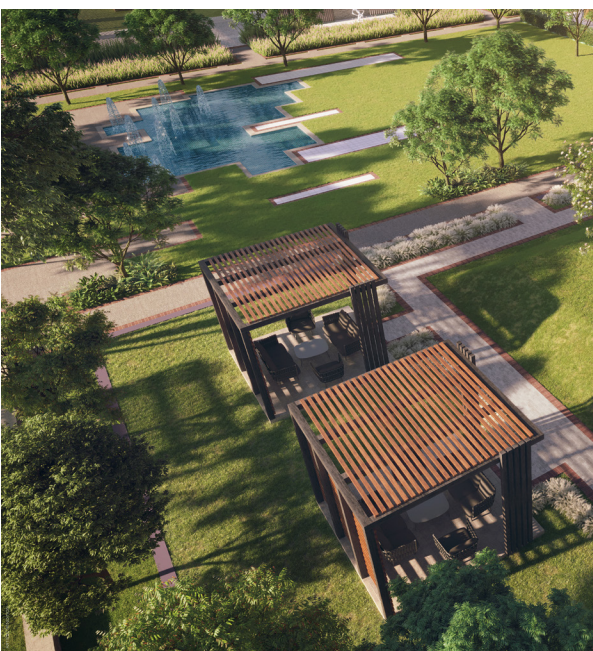
Walkways, cycling trails, and recreation zones encourage movement and outdoor engagement. From morning jogs to evening strolls, fitness becomes a natural, joyful part of everyday living.

## **Environmental Well-being**

The landscape embraces natural contours through native planting, shaded walkways, and sustainable, water-sensitive design. These choices preserve the land's essence while creating a refreshing, green microclimate.

## **Emotional Well-being**

Shaded trees, tranquil water features, and green retreats offer moments of reflection and calm. Every element evokes joy and mindfulness, creating a peaceful rhythm to daily life.





The Hub at Estate 128 admeasures ~ 4273.5 sq. m. and encompasses the club and sports complex (indoor and outdoor)

# Construction Update

## Tower 1

The thirty-second floor slab work has been completed, and the thirty-third floor slab work is in progress.





## Tower 2

The thirty-second floor slab work has been completed, and the thirty-third floor slab work is in progress.



### Tower 3

The thirty-fifth floor slab work has been completed, and the thirty-sixth floor slab work is in progress.

### Tower 4

The second-floor slab work has been completed, and the third-floor slab work is in progress.





## A home for you, a home for everyone.

At Estate 128, we believe everyone deserves to experience the comfort of home. We're proud to bring this belief to life in partnership with Habitat for Humanity, a global non-profit enhancing housing for marginalised families at Rewari, India.

Through this initiative, a portion of the proceeds from residential sales at Estate 128 goes toward addressing urgent housing needs for those who need it the most.

Phase I of this initiative was successfully delivered this year, with 25 homes handed over to the residents of Rewari village, in Haryana.

# 'Pulse' socials breathing life into our LiveWell experiences

By combining excellent hospitality with communal experiences, comforts, technology, and design, we hope to create a space where you can live more at work and do more at home. Our in-house vertical, Pulse, ensures our developments are always pulsing with life, with engagement driven activities curated by dedicated culture managers. We fulfil the "WorkWell and LiveWell" promise by giving life to a building and nurturing its occupants to be healthier and happier.



P U L S E



# Our presence across Delhi-NCR



\* This is a proposed residential development which is under the planning stage. No sale or renting is presently being undertaken at this project.

\*\* These are the proposed commercial developments which are under the planning stage. No sale or renting is presently being undertaken at these proposed projects.

# Sustainably Yours



Estate 128, our first LiveWell experience in NCR, is also IGBC Platinum Pre Certified. As a progressive real estate player, we want to make a positive contribution to the environment. We have consciously made choices that minimize the carbon footprint during the lifetime of our assets.



Round-the-clock hot water supply



Using renewable solar energy for common area lighting



Using organic waste converter for converting organic waste into compost



Low AQI homes

# Imagined by respected thought leaders in design and architecture.

Studio Lotus  
New Delhi, India  
Concept architect  
& Interior designer

RSP Design Consultants  
Gurugram, India  
Project architect

Oracles  
New Delhi, India  
Landscape architect



Promoter Name: MAX ESTATES 128 PRIVATE LIMITED | Promoter Registration No.: UPRERAPRM235248



For Estate 128: U.P. RERA Registration No. : UPRERAPRJ446459.  
For more details refer to project information uploaded on <https://www.up-rera.in/>  
Collection A/c for Estate 128: "Max Estates 128 Private Limited Collection A/c for Estate 128",  
ICICI Bank Ltd., Sector 18, NOIDA having IFSC Code ICIC00000031, Account No.: 003105042349



For Estate 128 - II: U.P. RERA Registration No. : UPRERAPRJ294911/12/2024  
For more details refer to project information uploaded on <https://www.up-rera.in/>  
Collection A/c for Estate 128 - II: "Max Estates 128 Private Limited Collection A/c for Estate 128 - II", Standard  
Chartered Bank Ltd., K-3 Brahm Datt Tower, Sector 18, NOIDA - 201301 having IFSC Code: SCBL0036024, Account No.: 53005090207

Max Estates Ltd. (CIN No. U70200PB2016PLC040200) is having its Corporate office at Max Towers, L-20, C-001/A/1, Sector-16B, Noida, Gautam Buddha Nagar, Noida UP 201301 & Registered office at 419, Bhai Mohan Singh Nagar Village Railmajra, Tehsil Balachaur, Nawanshehar, Punjab 144533. Max Estates Ltd. is the promoter of Max Estates 128 Pvt. Ltd. (CIN No. U55101DL2006PTC151422) Regd. Office: Max House, 1, Dr. Jha Marg, Okhla, New Delhi 110020). This document and its contents are intended for the exclusive use of Max Estates 128 Pvt. Ltd., its associate companies and any intended recipients with whom same is shared. This document/ information may not be published, circulated, reproduced and otherwise distributed to any third party without the express written consent of Max Estates 128 Pvt. Ltd.

Disclaimer: This is not an offer, an invitation to offer and/or commitment of any nature. The images include artistic impressions and stock images. Intending buyers are advised to use their discretion in relying on the information/amenities described/shown therein. All specifications of the Project, Apartment/ Unit shall be as per the documents/information uploaded by the company on the website of UPRERA and the agreement between the parties.  
1 sq. mtr. is equal to 10.764 sq. ft. 1 acre is equal to 4046.86 sq. m.